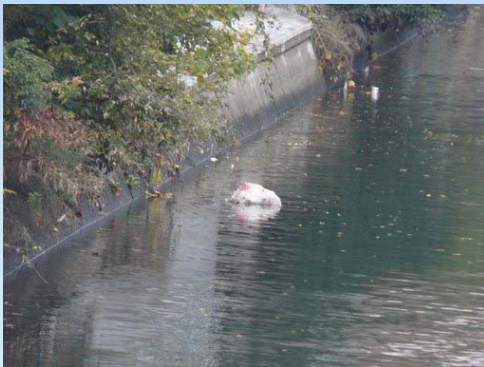
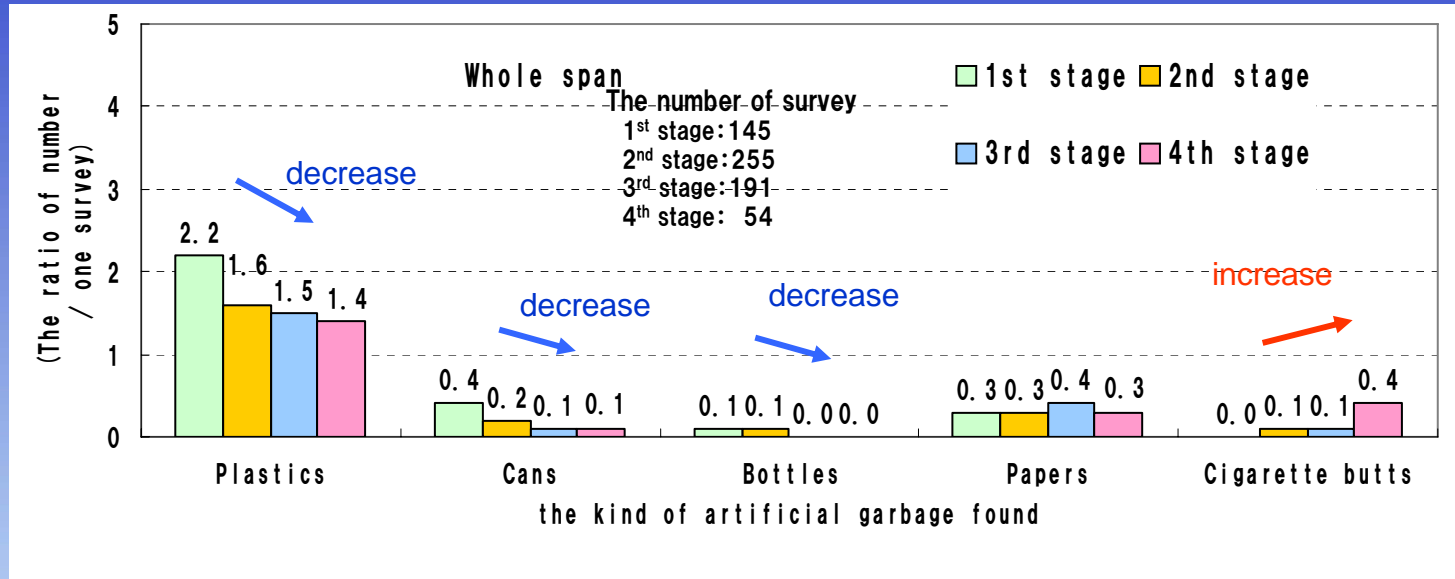


Garbage



Suspended Solids (S.S.)

- ① Change in the number of S.S. (artificial garbage)
(in whole span, with TRWKR, no-rain)



■ Artificial garbage

Plastics (plastic bags, shopping bags, pot noodle cups, foam tray, plastic bottles, garbage bags), cans, glass bottles, cigarettes (package, stubs)

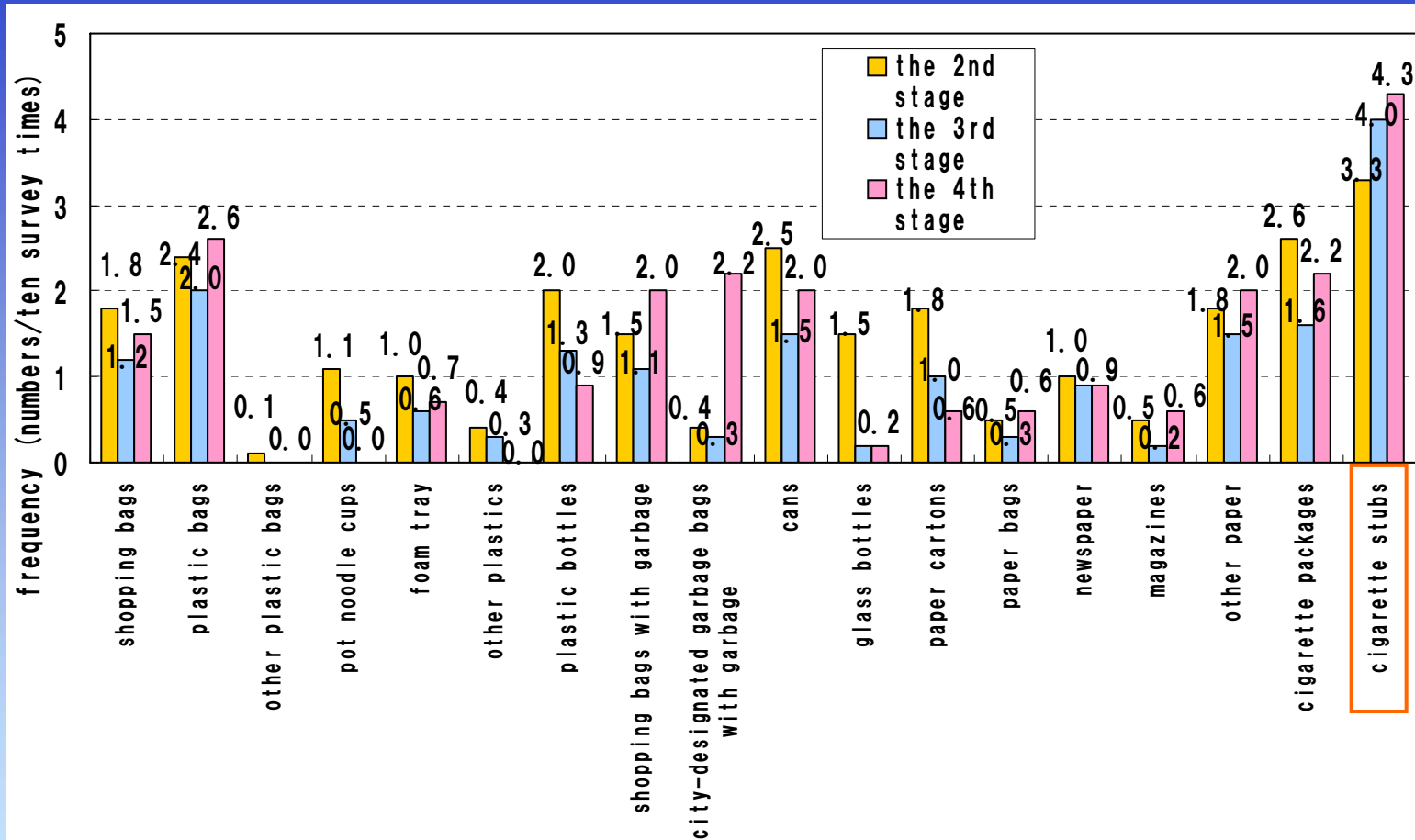
■ Has suspended solids been decreased?

“Plastics”, “Cans”, and “Glass bottles” have been decreased compared with the 1st stage. It can be thought that, progress of civic awareness for clean-up the Horikawa River has decreased artificial garbage.



Street Garbage

① Change of frequency (the 2nd stage~the 4th stage, All spans)



■ Has the frequency of seeing street garbage been decreased?

Frequency has been decreased in many items. However, “shopping bags with garbage”, “city designated garbage bags with garbage” have been increased. There is a possibility that, these bags were temporary remained during cleaning campaign. “Cigarette stubs” are seen the most frequently, and increasing.