

Color of Water

Green



Middle tide falling tide
Dec. 12th 2007

Yellow-grey



Middle tide flood tide
Oct. 22nd 2007

Light grey-yellow-green



Middle tide flood tide
Jun. 16th 2008

In this case of color, “egg-rotten smell”, “Fishes seem suffering” were reported. This water color are seemed between middle tide with low tide frequently, than spring tide.



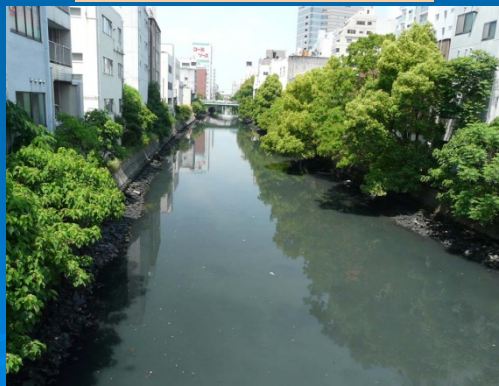
These pictures were taken at the Nisikibashi Bridge.

Grey-yellow-green



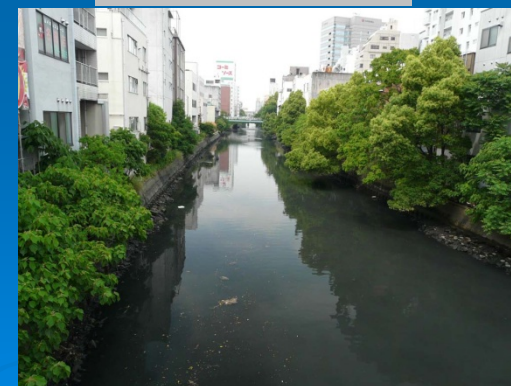
Middle tide flood tide
Nov. 6th 2007

Grey-green



Spring tide, near low tide
May 5th 2008
Sludge is risen.

Dark- grey



Spring tide, low tide
May 20th 2008
Sludge is risen. Black sedimented-sludge is seen, too.